
Lower ground.

124 cycle spaces

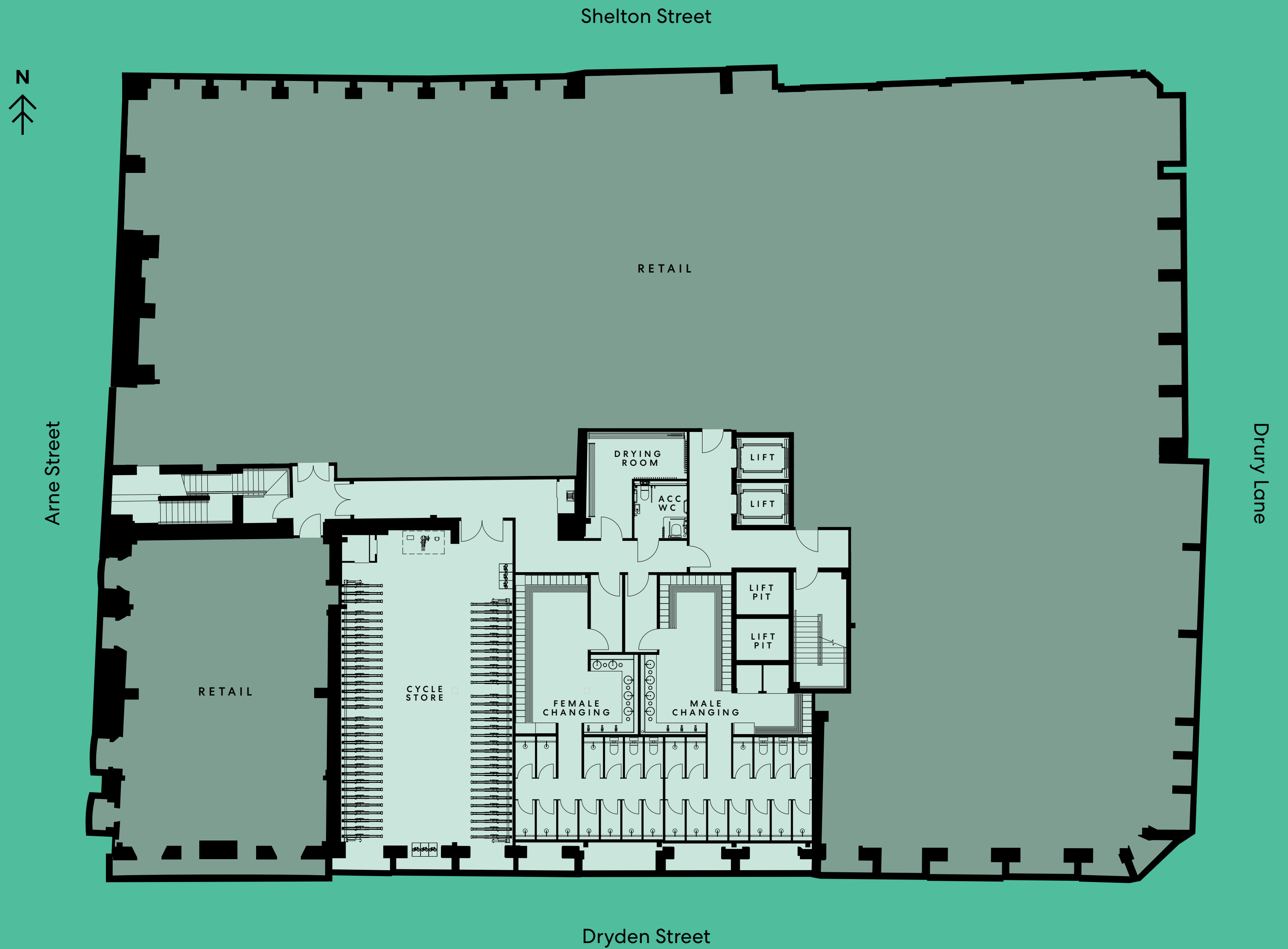
18 Brompton bike lockers

21 showers
(10 male, 10 female, 1 accessible)

136 lockers

Drying room

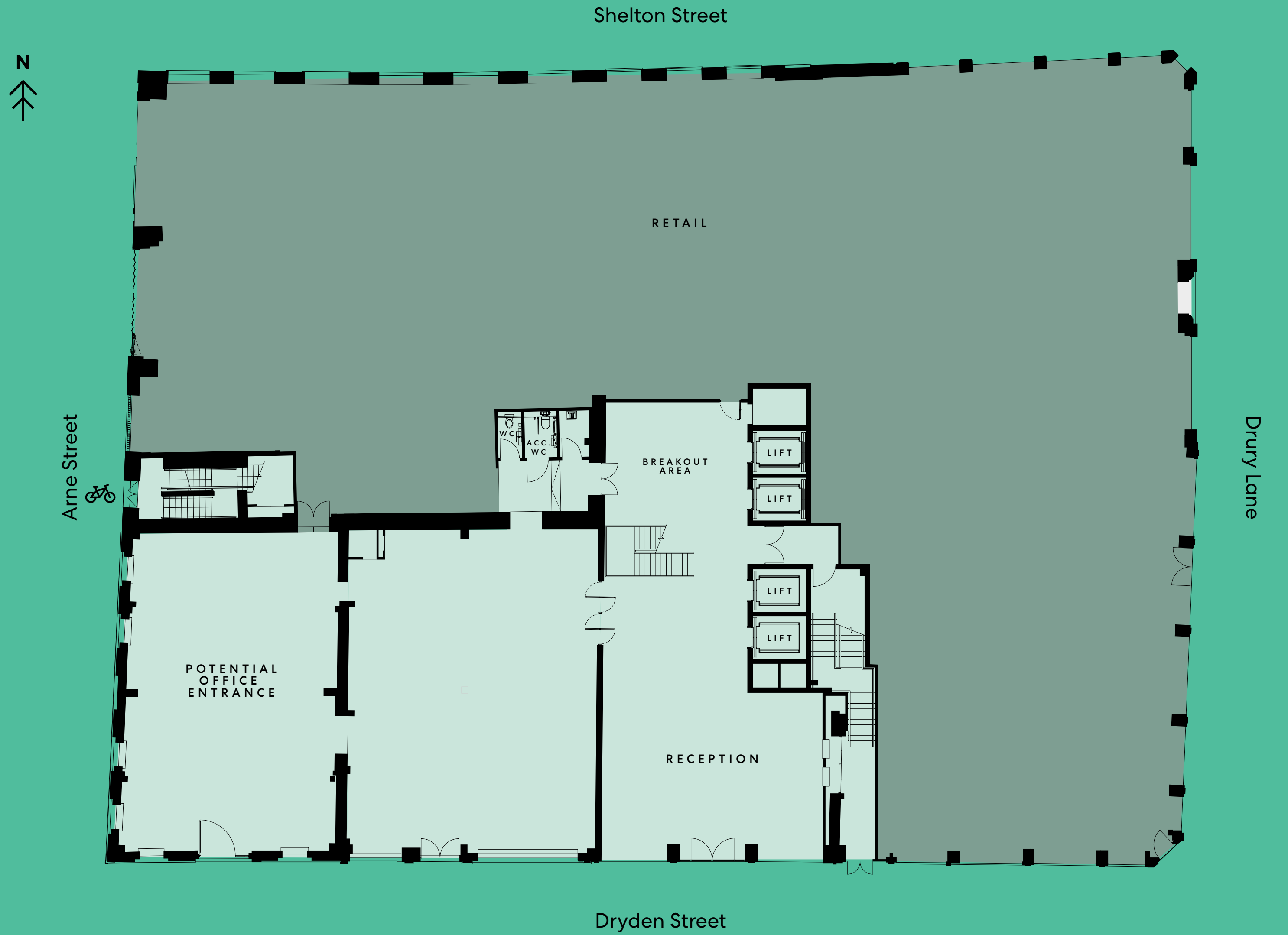
LG



Ground floor.

1,870 sq ft reception and breakout lounge with adjoining café

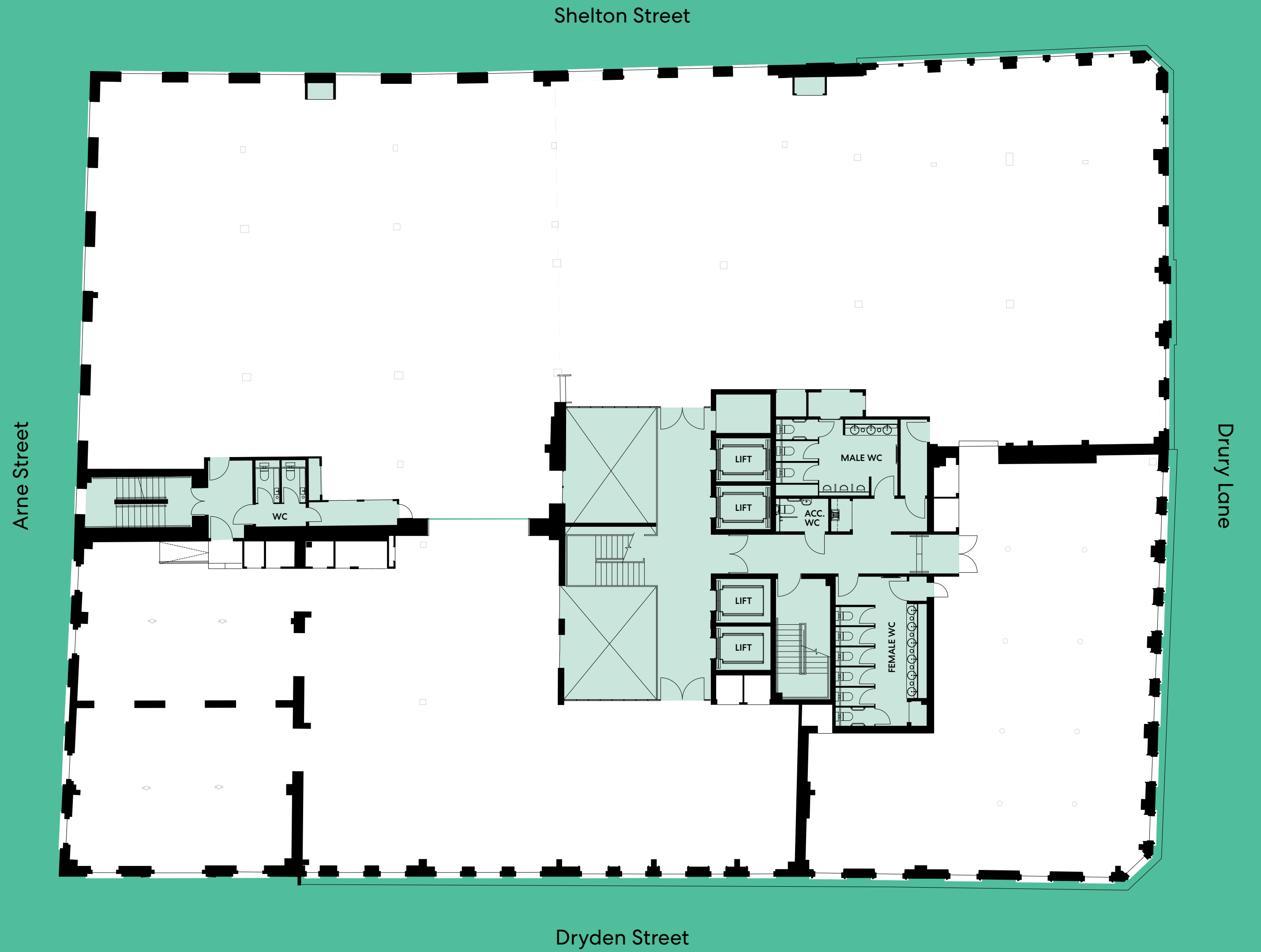
G



First floor.

15,662 sq ft
1,455 sq m

O1



Second floor. 15,791 sq ft
1,467 sq m

O2



**Fifth floor
terrace.**

1,421 sq ft
132 sq m



05

