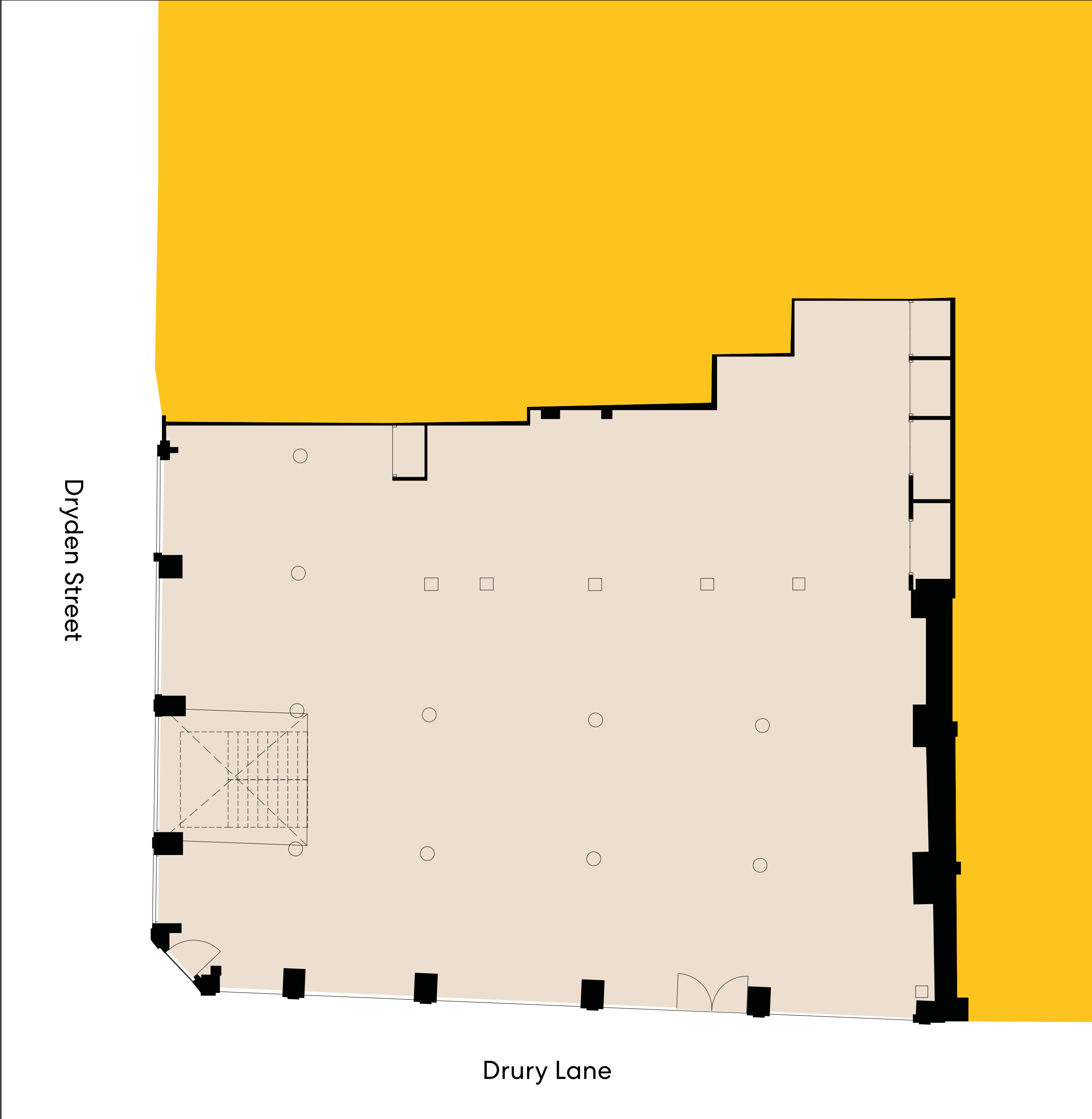


# 30-35 DRURY LANE

	Sq ft	Sq m
<b>GROUND FLOOR</b>	2,939	273
<b>LOWER GROUND FLOOR</b>	3,272	304
<b>Total</b>	6,211	577

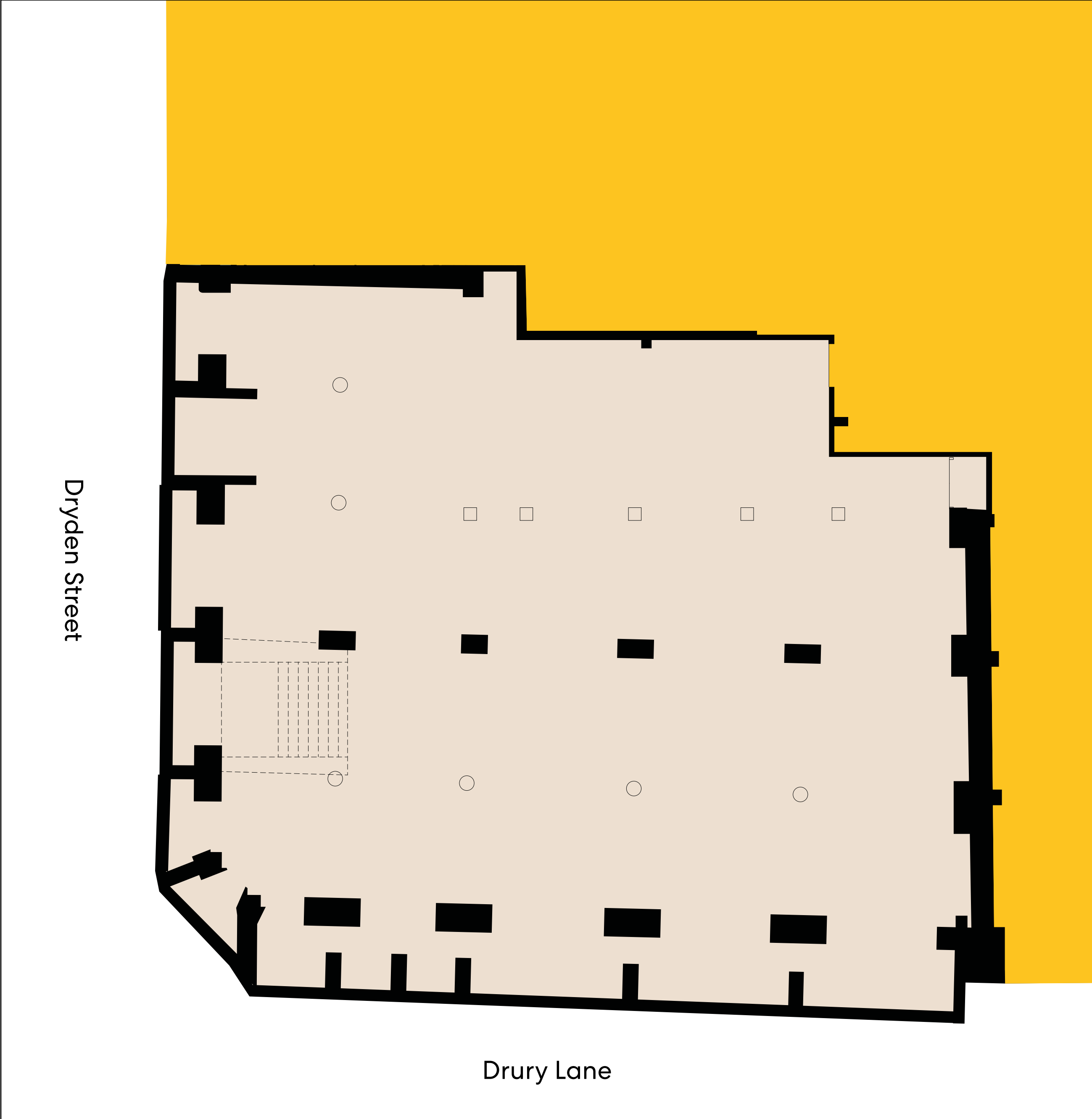
- Class E unit
- Stand-out corner entrance on Drury Lane and Dryden Street, additional Drury Lane entrance
- Delivered as a shell with pre-formed void for internal stairs
- New double-glazed painted timber shop front with brass lattice inlay
- Glazed timber door with brass ironmongery
- Ground floor to ceiling height 3,665mm
- Lower ground floor to ceiling height 2,830mm



# 30-35 DRURY LANE

	Sq ft	Sq m
<b>GROUND FLOOR</b>	2,939	273
<b>LOWER GROUND FLOOR</b>	3,272	304
<b>Total</b>	<b>6,211</b>	<b>577</b>

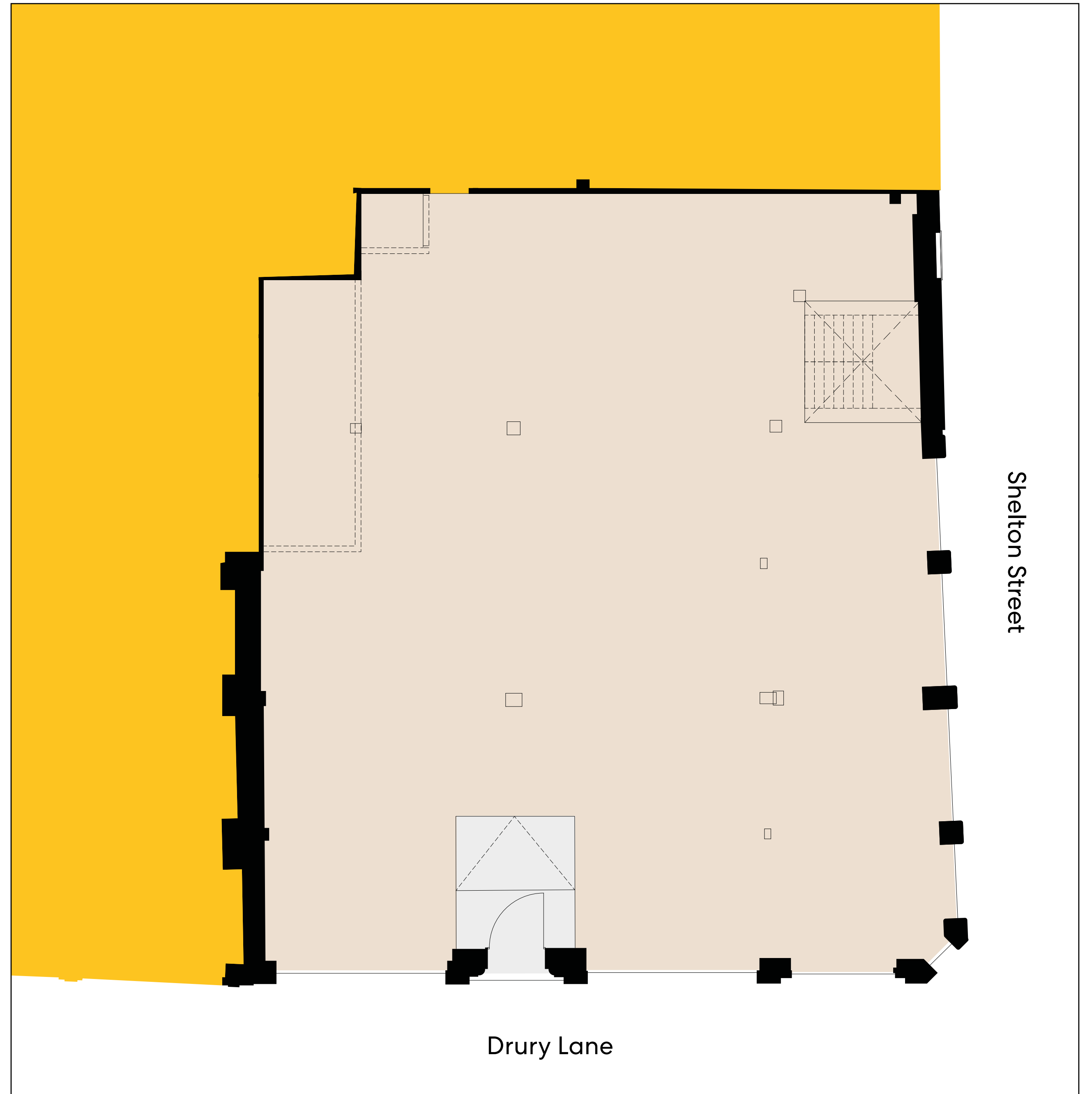
# LOG



# 26-29 DRURY LANE

	Sq ft	Sq m
<b>GROUND FLOOR</b>	3,412	317
<b>LOWER GROUND FLOOR</b>	3,595	334
<b>Total</b>	<b>7,007</b>	<b>651</b>

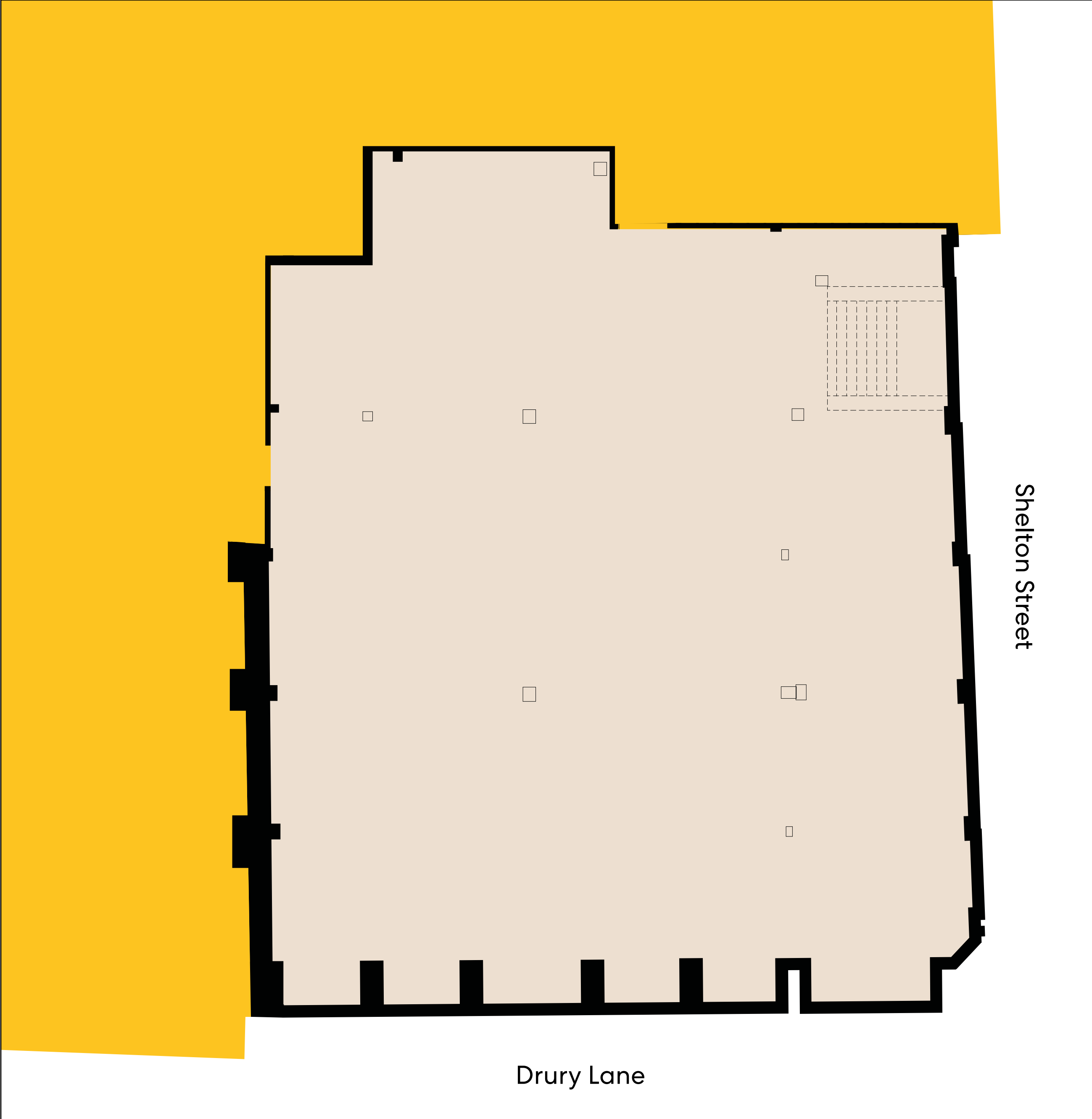
- Class E unit
- Delivered as shell with pre-formed void for internal stair and dumb waiter
- New double-glazed aluminium shop front and glazed aluminium doors
- Ground floor to ceiling height 3,545mm
- Lower ground floor to ceiling height 2,845mm



# 26-29 DRURY LANE

	Sq ft	Sq m
<b>GROUND FLOOR</b>	3,412	317
<b>LOWER GROUND FLOOR</b>	3,595	334
<b>Total</b>	<b>7,007</b>	<b>651</b>

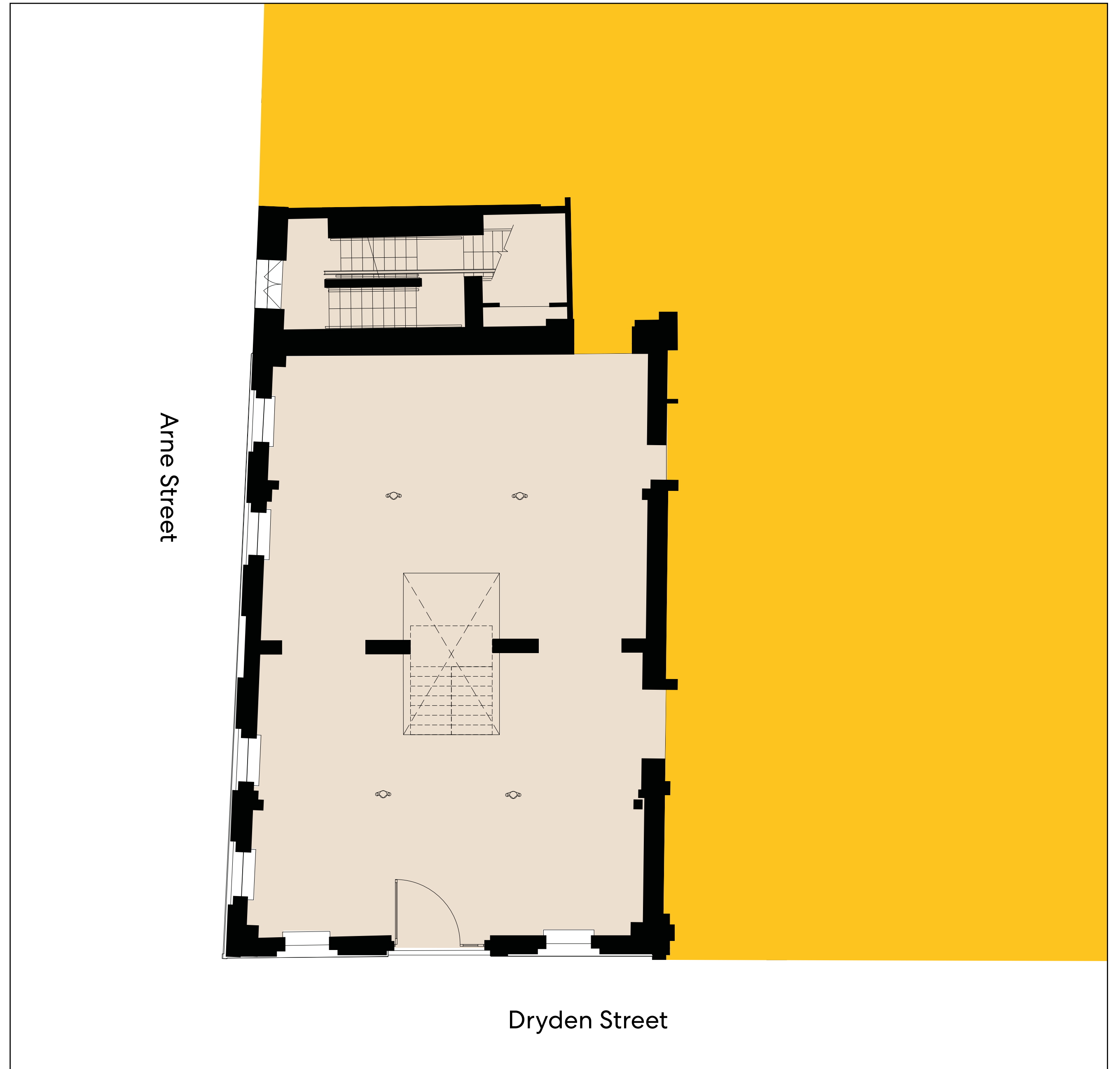
# LOG



# 12 DRYDEN STREET

	Sq ft	Sq m
<b>GROUND FLOOR</b>	1,485	138
<b>LOWER GROUND FLOOR</b>	1,561	145
<b>Total</b>	<b>3,046</b>	<b>283</b>

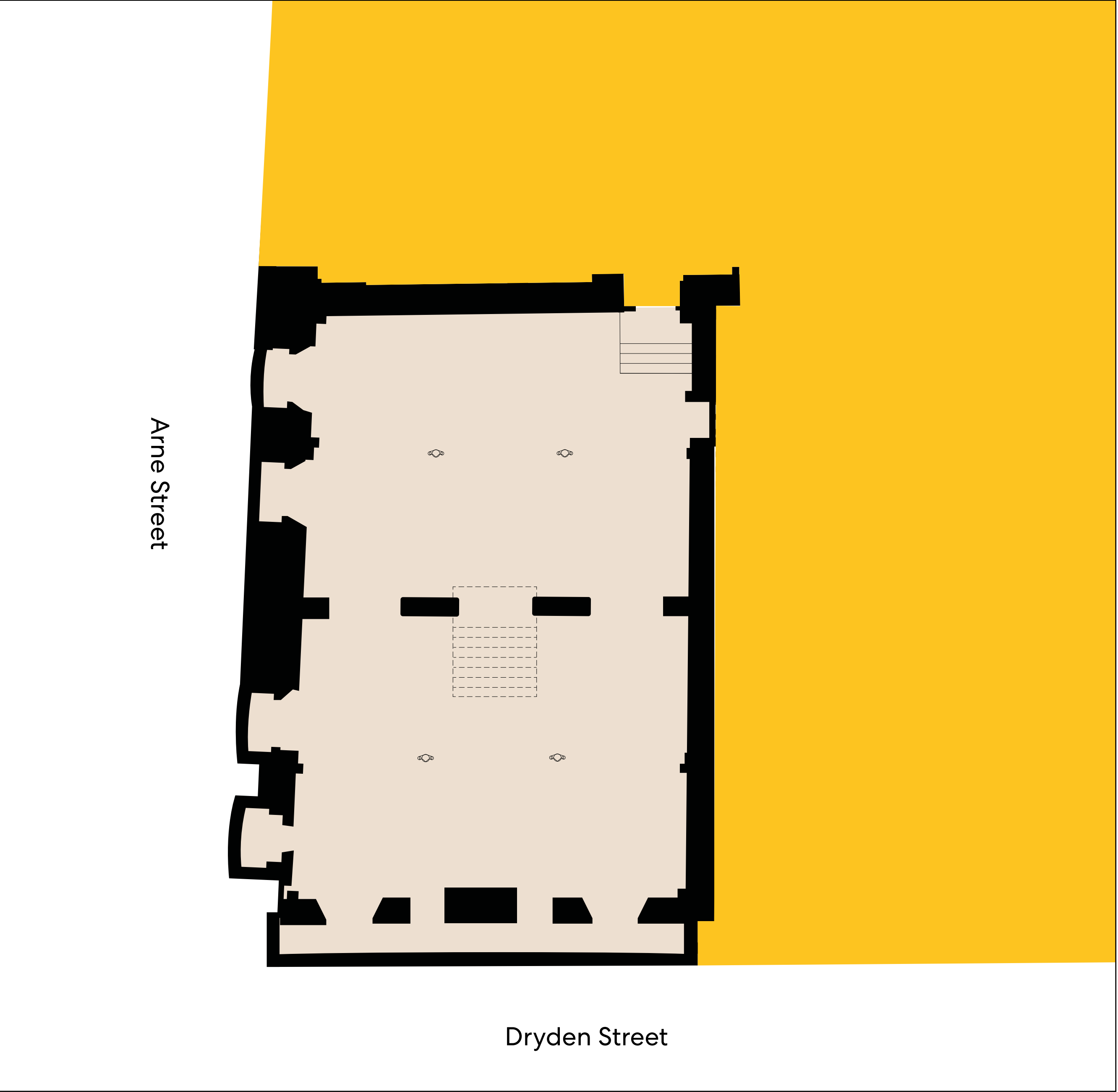
- Class E unit
- Large entrance with prominent street presence
- Split-level ground floor
- Option to combine with 2 Dryden Street
- Delivered as a shell with pre-formed void for internal stair
- Painted timber casement windows to Arne and Dryden Street elevations
- Ground floor to ceiling height 3,165mm
- Lower ground floor to ceiling height 2,510mm



# 12 DRYDEN STREET

	Sq ft	Sq m
<b>GROUND FLOOR</b>	1,485	138
<b>LOWER GROUND FLOOR</b>	1,561	145
<b>Total</b>	<b>3,046</b>	<b>283</b>

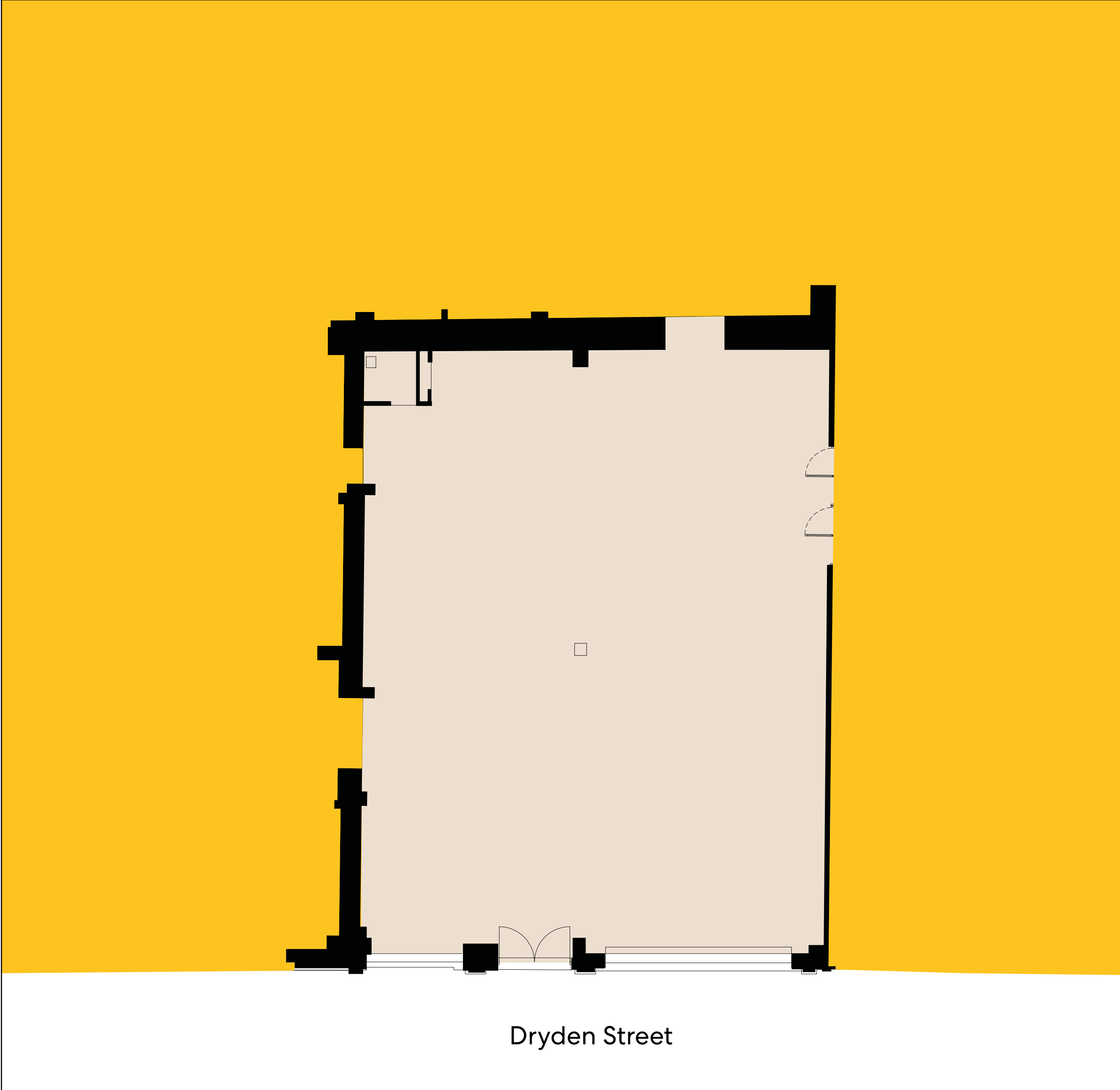
# LOG



# 8-10 DRYDEN STREET

	Sq ft	Sq m
<b>GROUND FLOOR</b>	1,894	176
<b>Total</b>	1,894	176

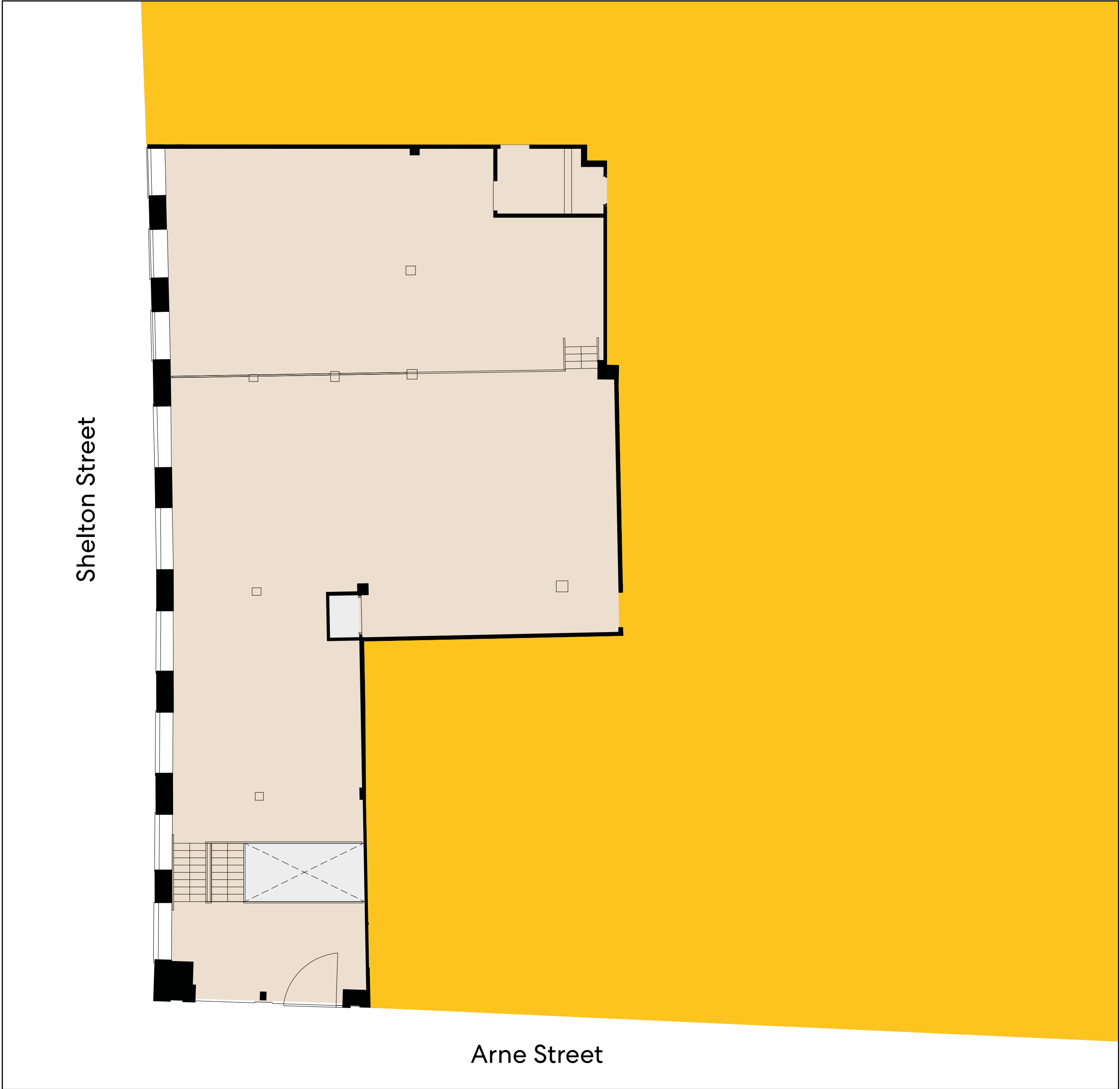
- Class E interconnecting with office entrance
- A1 retail use as café linked to office reception/atrium space
- Option to combine with 1 Dryden Street
- New double-glazed aluminium shop front and glazed aluminium doors
- Ground floor to ceiling height 3,335mm



# 6 ARNE STREET

	Sq ft	Sq m
<b>GROUND FLOOR</b>	3,391	315
<b>LOWER GROUND FLOOR</b>	1,281	119
<b>Total</b>	4,672	434

- Class E unit
- Delivered as a shell with pre-formed void for internal stair
- New double-glazed aluminium shop front and glazed aluminium doors
- Crittall style black steel windows to Arne and Shelton Street elevations
- Ground floor to ceiling height 3,230mm / 3,545mm
- Lower ground floor to ceiling height 3,565mm





# 6 ARNE STREET

	Sq ft	Sq m
<b>GROUND FLOOR</b>	3,391	315
<b>LOWER GROUND FLOOR</b>	1,281	119
<b>Total</b>	<b>4,672</b>	<b>434</b>

# LOG

